

MSAD Login V1.5

A Windows login process for Mac OS X

User manual

Copyright © 2006 Pa-software.



This manual is copyright 2003-2006 Pa-software. All rights reserved.

Software and documentation is available from <http://www.pa-software.com>. You may download and use Pa-software programs, but you may not sell or redistribute them. You may download, print, copy, edit, and redistribute the documentation as long as the copyright is included, but you may not sell it, or sell any documentation derived from it.

You may not modify or attempt to reverse engineer the programs. Pa-software programs and documents are available from our web site as is. No warranty or support is provided. Warranties and support, along with specialist solutions, are sold by Pa-software.

Pa-software assumes no responsibility or liability for any errors or inaccuracies that may appear in this documentation. By downloading and using our programs and documents you agree to these terms

All brands or product names used in this documentation are trademarks or registered trademarks of their respective companies or organizations.

About MSAD Login

MSAD Login is a system that connects a Macintosh OS X machine to a Windows server running Active Directory.

This way of connecting to a Windows server allows OS X users to mount their home drive and get notifications when passwords are about to expire. This method of login is very different from the specified method documented by Apple in that accounts are not tied to the server, this means that when the computer is not connected to the network it can still be logged into, which is of particular use for PowerBooks or computers connected over the internet.

This method of logging in and mounting shares has a major benefit over using the 'Connect to server' method, as it will not lock your account if you use an incorrect password. You will also be told if your account has expired or has been locked out, something that is lacking (even in 10.4) when using Apple's 'Connect to server' method.

The way that MSAD Login connects to the server has other benefits, such as the fact that no changes are needed in the Active Directory schema (the database used to hold Windows user accounts).

The login procedure also allows passwords to be changed on both the server and the Macintosh.

One of the benefits of this system is that it checks with the Windows server to see if a password is about to expire, and warns up to 14 days before it actually expires.

For the latest news and information about MSAD Login, visit the website at <http://www.pa-software.com/products/>

Minimum System Requirements

- Any G3 system
- Mac OS X version 10.2 or later
- 128 megabytes (MB) of random access memory (RAM)
- Microsoft Windows 2000 / 2003 server running Active Directory (AD)

To make sure you have the latest version of Mac OS X, choose System Preferences from the Apple menu, and then click Software Update. Click Update Now to retrieve updates for your system.

Installation

Installing and using MSAD Login

If you have previously installed MSAD Login, then running MSAD Login installer will replace your previous installation.

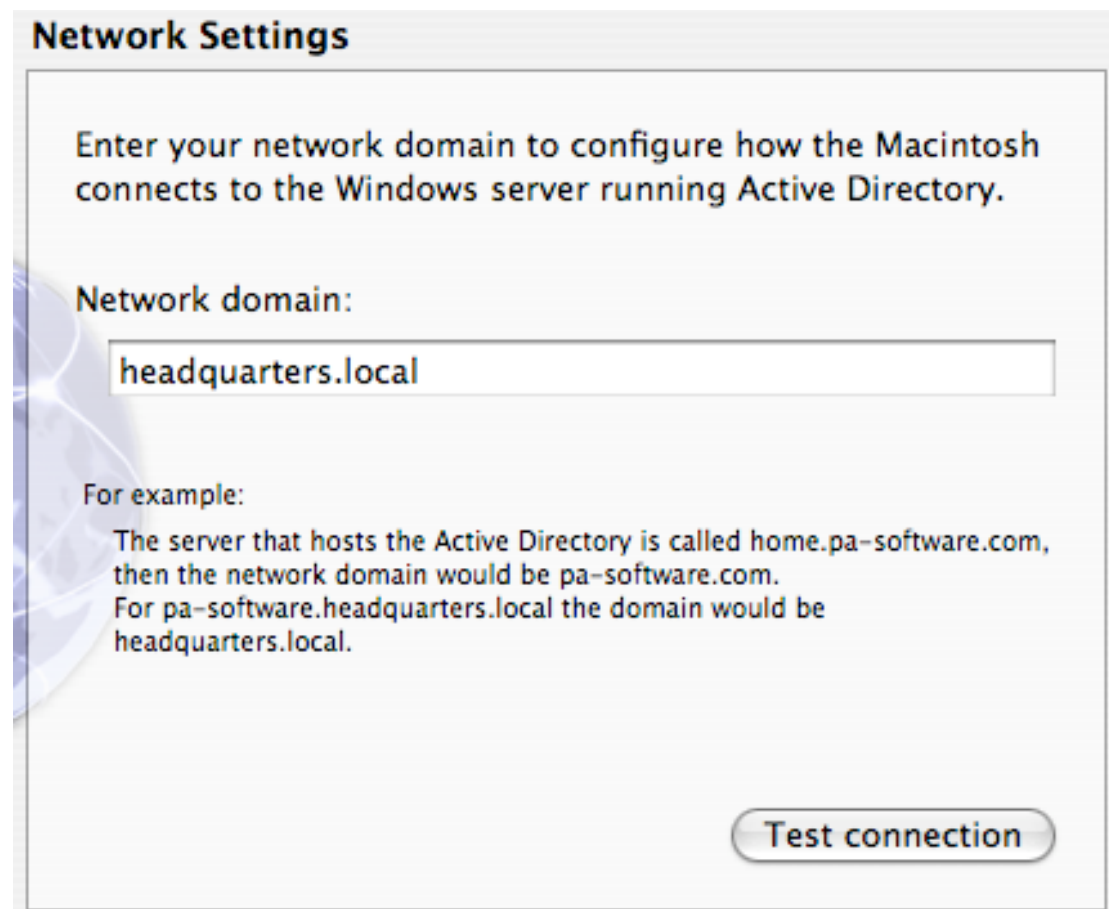
If you receive a message that you do not have sufficient privileges to install this software, you will need to ask the current administrator of the machine to install the software. The administrator's name is shown in the User pane or Accounts of System Preferences depending on the version of OS X you are running. For more information, see Mac help, available in the Help menu.

Setting up MSAD Login

After installation the option is given to enter the network details using the Setup Assistant.

Note: If you need to change any of the network details given when MSAD Login was installed, then running 'Setup Assistant' (which is found in '/Library/Application support/Pa-software/MSAD Login') will allow you to enter your network settings or change your existing settings. It also allows you to add the login process to users after the installation.

1. Network settings



Network Settings

Enter your network domain to configure how the Macintosh connects to the Windows server running Active Directory.

Network domain:

For example:
The server that hosts the Active Directory is called home.pa-software.com, then the network domain would be pa-software.com.
For pa-software.headquarters.local the domain would be headquarters.local.

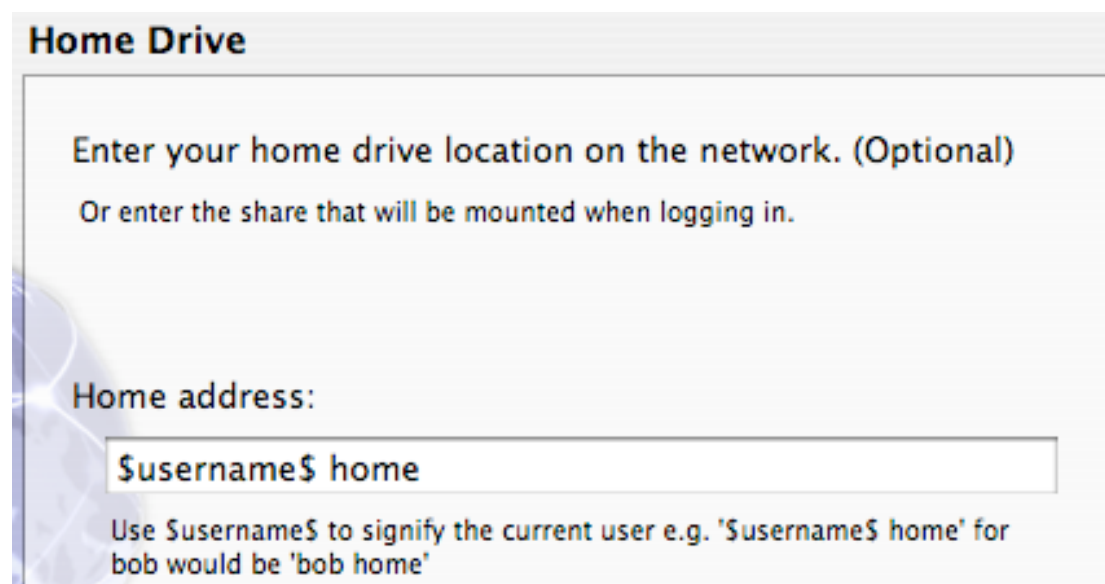
Test connection

Network domain:

This is the Windows server domain e.g. *headquarters.local* or *pa-software.com*

To check if the domain is correct, you can click on the 'Test connection'. This will try and contact the server to check if the details are valid.

2. Home drive



Home Drive

Enter your home drive location on the network. (Optional)
Or enter the share that will be mounted when logging in.

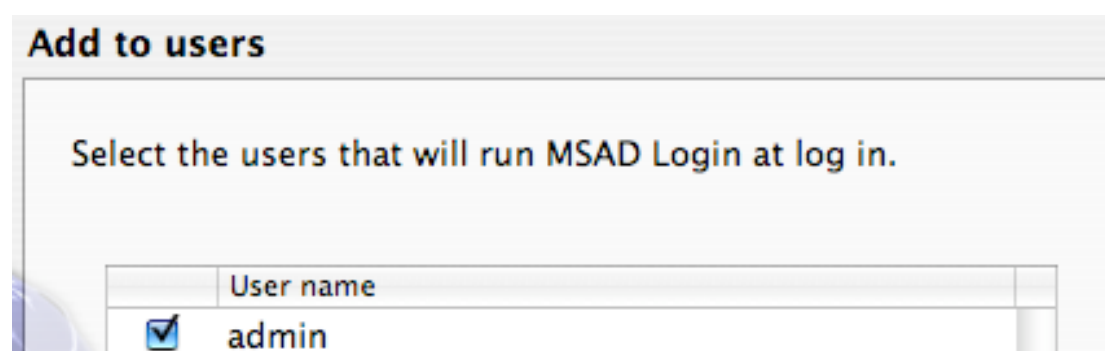
Home address:

Use \$username\$ to signify the current user e.g. '\$username\$ home' for bob would be 'bob home'

Home address: This is either a shared volume on the server or a generic users volume e.g. the volume 'smb:\\pa-software.headquarters.local\shared' (where pa-software is the name of the server) would be entered as 'shared' or for a generic user volume e.g. "smb:\\pa-software.headquarters.local\user home' would be entered as '\$username\$ home', where \$username\$ stands for the user that is currently logged in.

Note: As Samba currently cannot mount folders inside volumes (such as '/home/\$username\$/My documents'), it is suggested that either you enter only volume names or use a system such as DAVE.

3. Add to users



Add to users

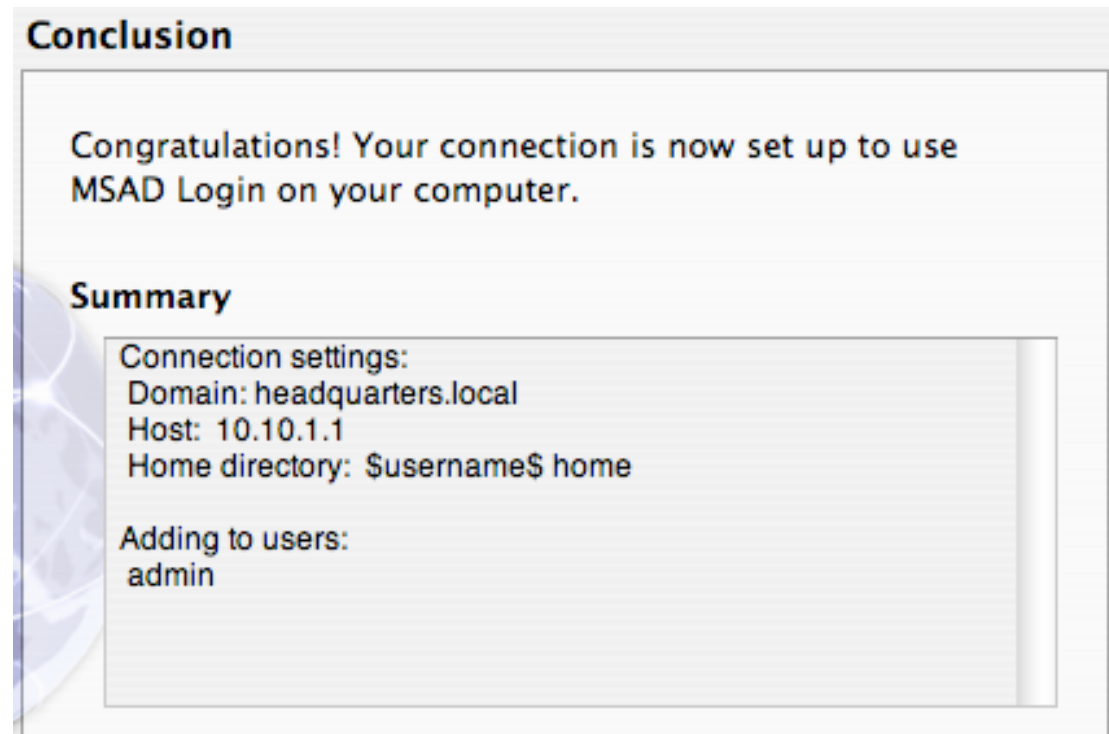
Select the users that will run MSAD Login at log in.

	User name
<input checked="" type="checkbox"/>	admin

This page allows you the option of adding the login process to selected users only. This option can also be used afterwards to add to other users.

Note: Un-checking a user does not mean it will remove the login process if it is already present. To do this you must use the 'Login items' or 'Startup items' depending on the operating system you are using.

4. Conclusion



Conclusion

Congratulations! Your connection is now set up to use MSAD Login on your computer.

Summary

Connection settings:
Domain: headquarters.local
Host: 10.10.1.1
Home directory: \$username\$ home

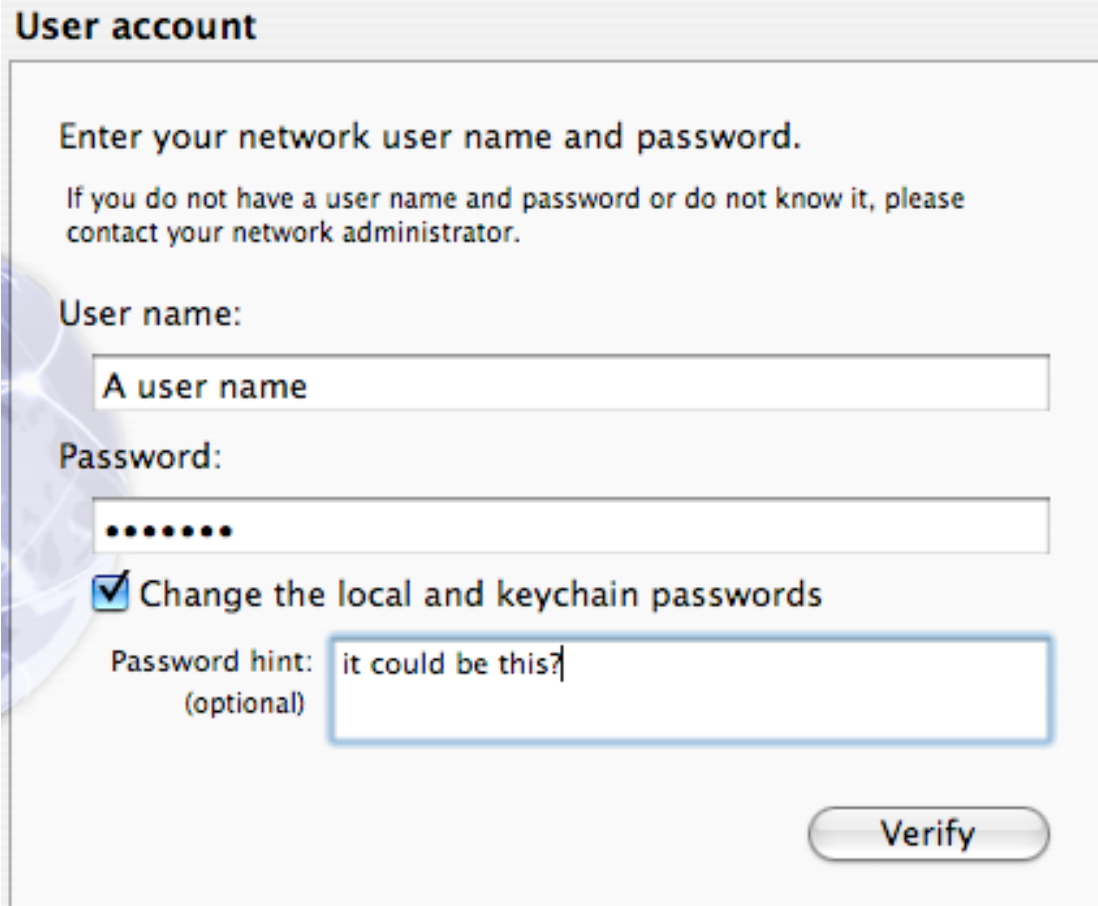
Adding to users:
admin

This page gives a summary of the settings you have chosen before they are saved, giving the opportunity to go back and make alterations.

Running MSAD Login for the first time

Setting up the network password

The Windows Active Directory network password is stored in the default keychain and must be entered the first time the application is run.



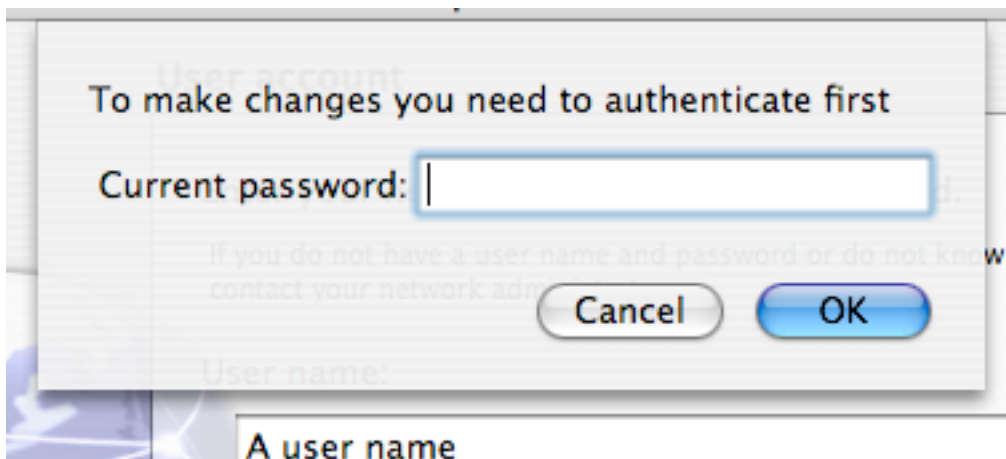
The screenshot shows a 'User account' dialog box with the following elements:

- Title:** User account
- Instruction:** Enter your network user name and password.
- Disclaimer:** If you do not have a user name and password or do not know it, please contact your network administrator.
- User name:** A text input field containing 'A user name'.
- Password:** A text input field containing seven dots.
- Checkbox:** Change the local and keychain passwords
- Password hint:** A text input field containing 'it could be this?' with '(optional)' below it.
- Button:** Verify

When creating the network password keychain item, you also have the option to change the current local password for both the local account and the default keychain.

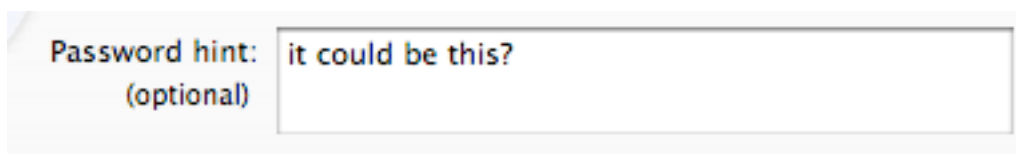
This is done by checking the 'Change the local and keychain passwords' checkbox.

Note: If you are changing the local and default keychain password, then you will need to authenticate with the current local password.



After authentication the application will store the password in the default keychain and use the key in the keychain to log into the Windows network each time you log into the Macintosh.

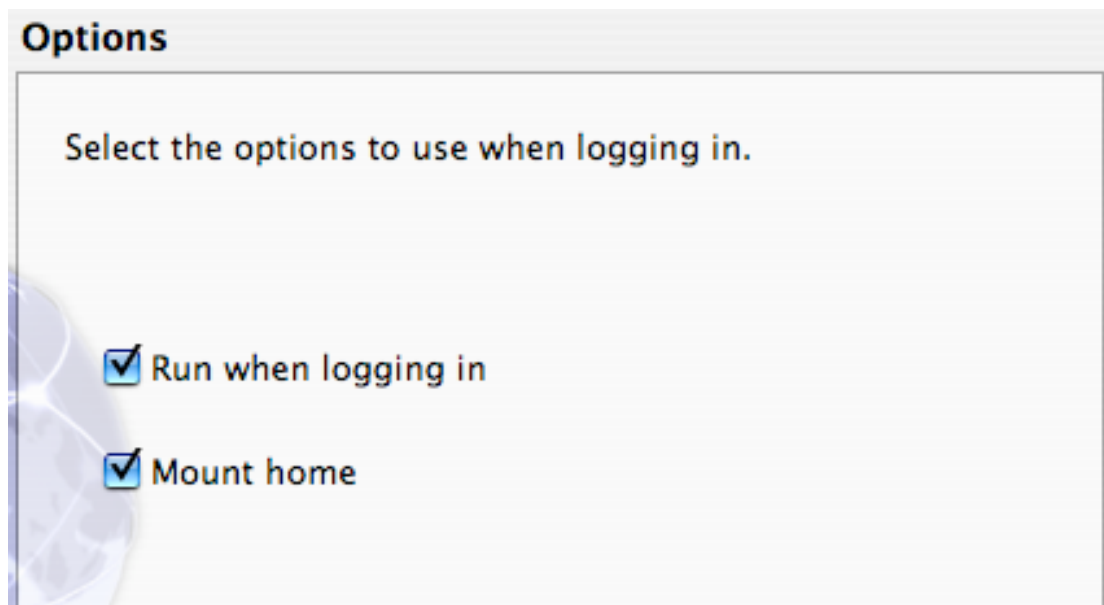
As an option, the local password hint can also be set or changed (this is only held locally as Windows does not have this feature without editing the Active Directory schema which is beyond the scope of this user guide).



Note: It is recommended that a hint is entered if more than one computer is used to connect to the Windows Active Directory account (this can only be set if the local password is changed).

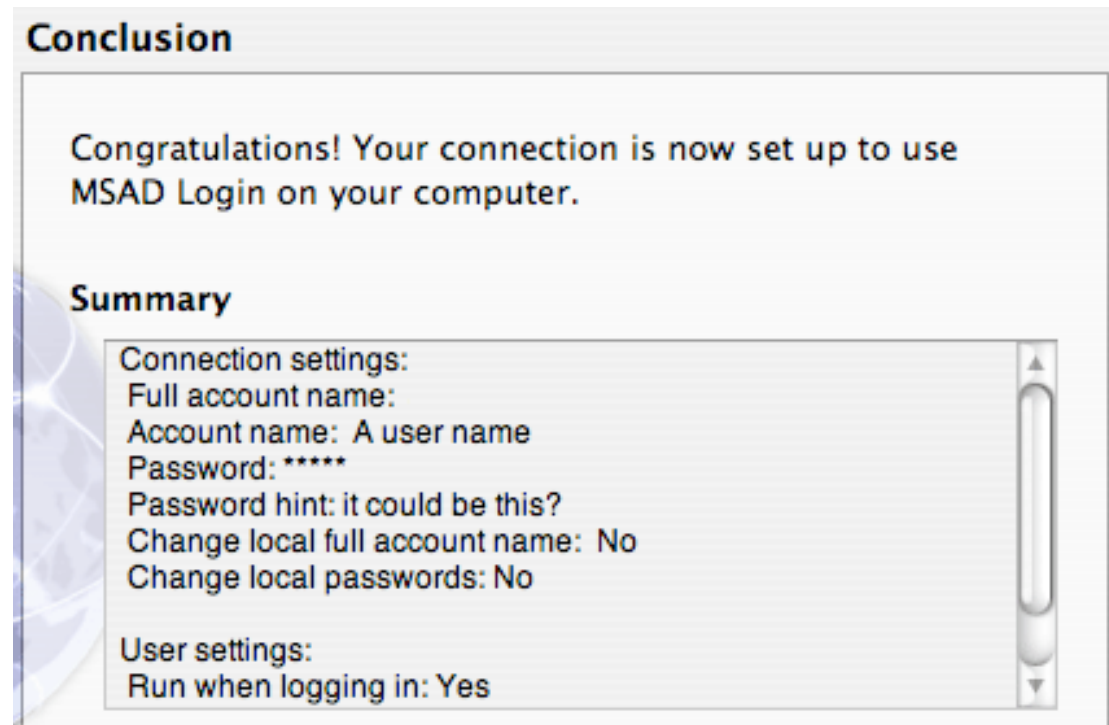
Setting the options

The options allow you to change the way MSAD Login runs on a user basis.



The first option controls if MSAD Login is run when you log into your account. The second option allows the user to control whether a home share is mounted when they log into their account.

Conclusion



This page gives a summary of the settings you have chosen before they are saved, giving the opportunity to go back and make alterations.

Uninstalling MSAD Login

To remove MSAD Login from your system:

1. To remove MSAD Login, just put the folder 'Library/Application Support/PA-software/MSAD Login' in the trash and delete the file 'MSAD Login.prefPane' in the folder 'Library/PreferencePanes/'.
2. You also need to remove the 'MSAD Login Setup Assistant.app' from '/Applications/Utilities/'.
3. If you have chosen to run MSAD Login at login, you should also remove MSAD Login from your login items in the accounts system preference.

For complete removal, delete the key 'MSAD network password' in the default keychain.

Copyright © 2006 Pa–software. All rights reserved.

Apple, the Apple logo, Power Mac, Power Macintosh,, PowerBook and OS X are trademarks of Apple Computer, Inc. Microsoft, Windows and Active Directory are trademarks of Microsoft Corporation.

Updated October 2006